

# 600A Series

## ARTICULATING BOOM LIFTS



*Extra Reach  
and Versatility*



*Various Configurations  
to Fit Specific Job Needs*



*Oscillating Axle  
for Tough Terrain*

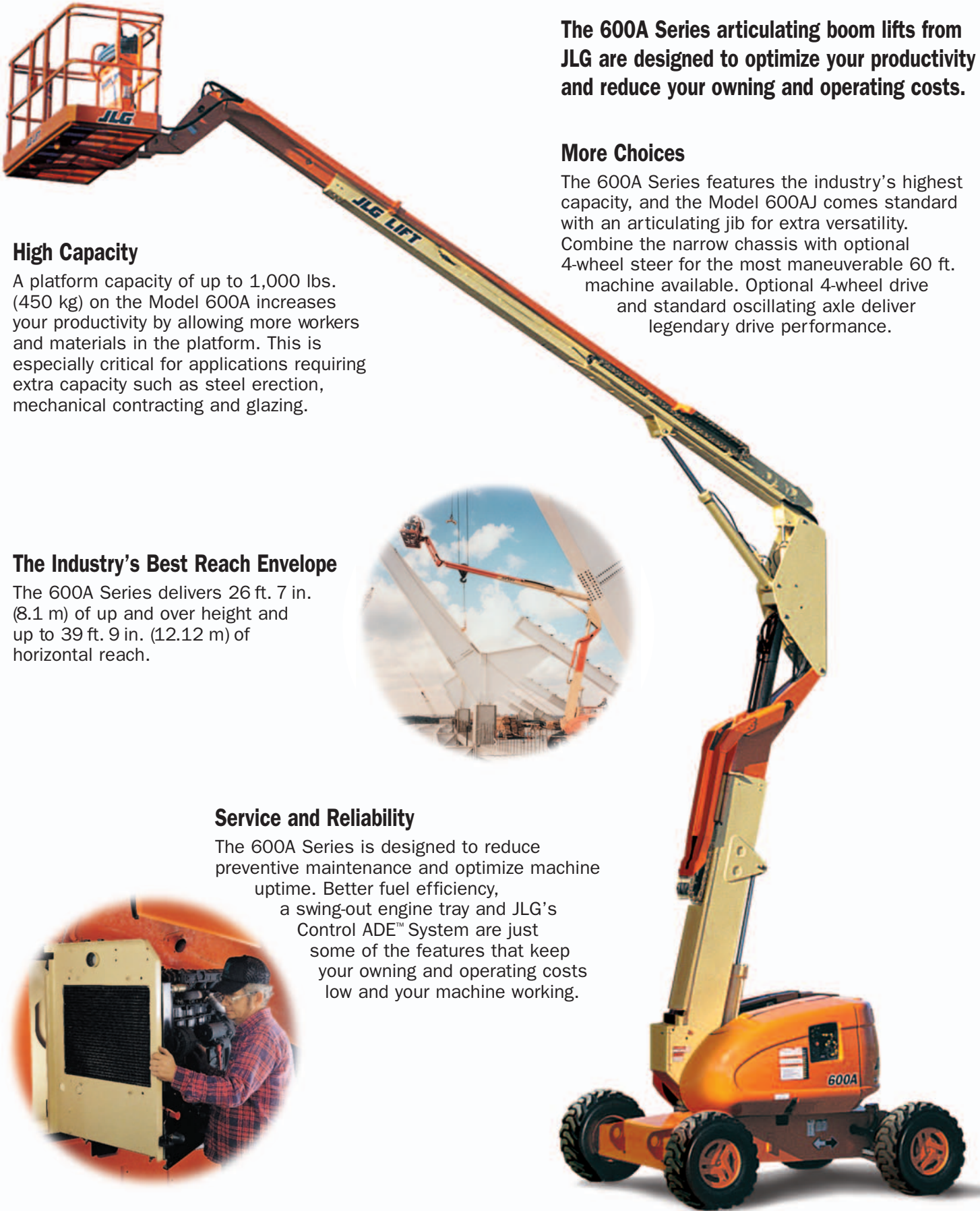


**600A**  
**600AJ**

[www.jlg.com](http://www.jlg.com)

**JLG**®

# A New Level of Productivity



The 600A Series articulating boom lifts from JLG are designed to optimize your productivity and reduce your owning and operating costs.

## More Choices

The 600A Series features the industry's highest capacity, and the Model 600AJ comes standard with an articulating jib for extra versatility. Combine the narrow chassis with optional 4-wheel steer for the most maneuverable 60 ft. machine available. Optional 4-wheel drive and standard oscillating axle deliver legendary drive performance.

## High Capacity

A platform capacity of up to 1,000 lbs. (450 kg) on the Model 600A increases your productivity by allowing more workers and materials in the platform. This is especially critical for applications requiring extra capacity such as steel erection, mechanical contracting and glazing.

## The Industry's Best Reach Envelope

The 600A Series delivers 26 ft. 7 in. (8.1 m) of up and over height and up to 39 ft. 9 in. (12.12 m) of horizontal reach.



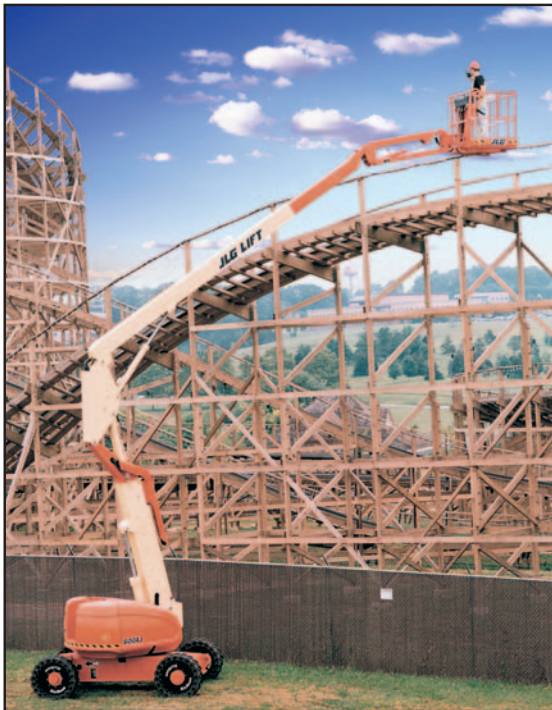
## Service and Reliability

The 600A Series is designed to reduce preventive maintenance and optimize machine uptime. Better fuel efficiency, a swing-out engine tray and JLG's Control ADE™ System are just some of the features that keep your owning and operating costs low and your machine working.



# Options to Create Your Workstation in the Sky™ Product

Transform your Model 600A or 600AJ into a true Workstation in the Sky™ product with exclusive options and accessories from JLG. Whether designed for a specific application like the SkyWelder™ Package or to meet a variety of needs like the SkyPower™ Package, JLG has many options available to increase your productivity and enhance your work environment.



**SkyPOWER**

## SkyPower™ Package

JLG delivers more power where you need it with the SkyPower™ Package. Machines outfitted with the SkyPower Package include a 7500W self-contained generator, plus a power cable and a 1/2 inch air line routed through the boom's power track to the platform. As an added benefit, the SkyPower Package is designed to work with various add-on accessories, including the SkyWelder™ Package.

## SkyWelder™ Package

A Miller® welder is tucked into the SkyPower™ boom platform. Conserves space and provides stick and TIG capability. It also eliminates potentially dangerous leads hanging over the rails and the cost of a stand-alone welder and power supply. Wire feed capability and other convenient features are available.



## Greater Accessibility

The 600A Series is available with the industry's narrowest chassis and optional non-marking tires.

The 7 ft. wide 600A Narrow and 600AJ Narrow allow you to go where wider competitive machines can't.



## Outstanding Drive Performance

The standard oscillating axle delivers a smoother ride and better traction.

Optional 4-wheel steer provides unmatched maneuverability in confined areas.



## SkyGlazier™ Package

The first and only factory-approved glass and panel tray. Utilizes industry leading JLG capacity to get materials to the work site. Improves productivity and reduces operator fatigue, while helping to protect panels from damage.



## SkyCutter™ Package

Cut faster and cleaner with an on-board Miller® plasma cutter. Eliminate the potential dangers of Oxygen/Acetylene tanks and hoses draped over the railings. Add a SkyCutter™ Package to any unit equipped with the SkyPower™ Package.



## Pipe Rack Accessory

JLG's exclusive Pipe Rack Accessory is designed to secure pipes close to where they are needed. The pipe rack is mounted to the top platform rail and can hold up to 180 lbs. (80 kg) of pipe.

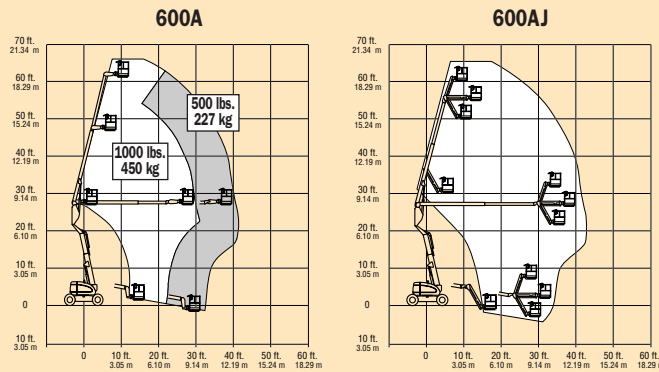


Keep checking [www.jlg.com](http://www.jlg.com) for additional Workstation in the Sky™ accessories.

\*Miller® is a trademark of Miller Electric.

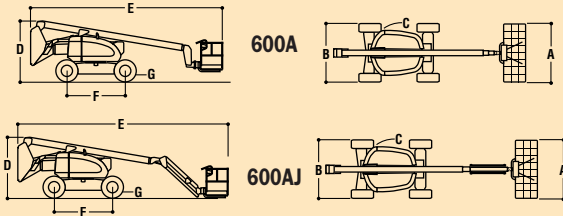
# JLG MODEL 600A/600AJ SERIES

# PERFORMANCE FEATURES



## REACH SPECIFICATIONS

Platform Height (600A)	60 ft. 5 in. (18.42 m)
Platform Height (600AJ)	60 ft. 7 in. (18.46 m)
Horizontal Outreach (600A)	39 ft. 7 in. (12.07 m)
Horizontal Outreach (600AJ)	39 ft. 9 in. (12.12 m)
Up and Over Clearance	26 ft. 7 in. (8.1 m)
Swing	360 Degrees Continuous
Platform Capacity—Restricted (600A)	1000 lbs. (450 kg)
Platform Capacity (600AJ)	500 lbs. (227 kg)
Platform Capacity—Unrestricted (600A)	500 lbs. (227 kg)
Platform Rotator	180 Degrees Hydraulic
Jib (Range of Articulation) (600AJ)	130 Degrees (+70, -60)



## DIMENSIONAL DATA

A. Platform Size	36 in. x 96 in. (0.91 m x 2.44 m)
B. Overall Width Model	8 ft. (2.44 m)
Overall Width Model Narrow	7 ft. (2.13 m)
C. Tailswing (working condition)	Zero
Tailswing (working condition) Narrow Models	5 in. (13 cm)
D. Stowed Height	8 ft. 4 in. (2.54 m)
E. Stowed Length (600A)	26 ft. 5 in. (8.05 m)
Stowed Length (600AJ)	28 ft. 11.5 in. (8.82 m)
F. Wheelbase	8 ft. (2.44 m)
G. Ground Clearance	12 in. (30 cm)
Gross Vehicle Weight Model 600A	21,500 lbs. (9,752 kg)
Gross Vehicle Weight Model 600A Narrow	23,900 lbs. (10,841 kg)
Gross Vehicle Weight Model 600AJ	22,200 lbs. (10,069 kg)
Gross Vehicle Weight Model 600AJ Narrow	24,000 lbs. (10,886 kg)
Max. Ground Bearing Pressure 600A	77 psi (5.5 kg/cm <sup>2</sup> )
Max. Ground Bearing Pressure 600A Narrow	94 psi (6.6 kg/cm <sup>2</sup> )
Max. Ground Bearing Pressure 600AJ	75 psi (5.27 kg/cm <sup>2</sup> )
Max. Ground Bearing Pressure 600AJ Narrow	93 psi (6.53 kg/cm <sup>2</sup> )

## CHASSIS

Drive Speed 2WD	4.25 MPH (6.8 kph)
Drive Speed 4WD	4.25 MPH (6.8 kph)
Gradeability 2WD	30%
Gradeability 4WD	45%
Tires	14 x 17.5 Lug Tread
Tires Narrow Models	14 x 17.5 Air Boss
Axle Oscillation	8 in. (20.4 cm)
Turning Radius, (Inside/Outside)	
2WS	11 ft. 5 in. (3.48 m)/17 ft. 8 in. (5.38 m)
4WS	5 ft. 6 in. (1.68 m)/11 ft. 8 in. (3.56 m)
Narrow Models 2WS	12 ft. 2 in. (3.71m)/16 ft. 6 in. (5.03 m)
Narrow Models 4WS	5 ft. 7 in. (1.7 m)/11 ft. 2 in. (3.4 m)

## POWER SOURCE

Dual Fuel Engine, Ford LRG-425	82 hp (61 kw)
Diesel Engine, Deutz F4M1011F	65 hp (48 kw)
Diesel Engine, Caterpillar 3044C	63.3 hp (47.2 kw)
Fuel Tank Capacity	30 gal. (113.6 L)
Hydraulic Reservoir	30.6 gal. (115.8 L)
Auxiliary Power	12V DC

## Standard Features

- 6 ft. (1.83 m) Articulating Jib (600AJ only)
- 36 in. x 96 in. (0.91 x 2.44 m) Low Mount Platform
- Side Entry Self-Closing Swing Gate
- 180 Degree Hydraulic Platform Rotator
- Platform Console Machine Status Light Panel\*
- 110V-AC Receptacle in the Platform
- 5 Degree Tilt Alarm/Indicator Light
- 14 x 17.5 Rim Protector Lug Tread Tires
- Swing-Out Engine Tray
- Gull-Wing Engine Hood
- 12V-DC Auxiliary Power
- Proportional Controls
- Control ADE™ System
- Lifting/Tie Down Lugs
- Hourmeter
- Horn
- Operator Tool Tray
- Oscillating Axle
- Motion Alarm
- SkyPower™ Package
  - 7500 Watt Generator
  - 240/120V Single Phase
  - 240V 3 Phase

\*Provides indicator lights at platform control console for system distress, low fuel, 5 degree tilt light, and foot switch status.

## Individual Options

- 36 x 72 in. Platform
- Mesh to Top Rail - Bolt-on Aluminum
- ½ in. Air Line to Platform
- Soft Touch System 6 ft./8 ft.
- Foam Fill for Tires
- 2500W Generator
- Tow Package<sup>1</sup>
- 43.5 Propane Tank
- Cold Weather Start Kit<sup>2</sup>
- Hostile Environment Kit<sup>3</sup>
- Engine Tray Hand Crank
- Light Package<sup>4</sup>
- Platform Worklights
- Flashing Beacon

1. Tow bar must be shipped separate from unit with 4WS and Dual Fuel or with narrow chassis.
2. Includes battery blanket, hydraulic tank heater, block heater (Ford and CAT) or glow plugs (Deutz, standard on CAT).
3. Includes console cover, boom wipers and cylinder bellows.
4. Includes head and tail lights and platform worklights.

## Accessories

- SkyWelder™ Package**—Includes SkyPower™ Package, 250-amp Miller® welder in the platform, leads, clamp, stinger and fire extinguisher.
- Pipe Rack**—Platform mounted, 180 lbs. (80 kg) capacity.
- SkyGlazier™ Package**—Includes side-entry platform with glass and panel tray.
- SkyCutter™ Package**—Includes SkyPower™ Package and Miller® plasma cutter mounted on platform.

## The JLG “1 & 5” Warranty for Models 600A & 600AJ

JLG Industries, Inc. backs our products with our exclusive “1 & 5” Warranty. We provide coverage on all products for one (1) full year, and cover all specified major structural components for five (5) full years. Due to continuous product improvements, we reserve the right to make specification and/or equipment changes without prior notification. This machine meets or exceeds applicable OSHA Regulations in 29 CFR 1910.67, 29 CFR 1926.453, ANSI A92.5-1992 and CSA B354.4-02 as originally manufactured for intended applications.

## JLG Industries, Inc.

1 JLG Drive, McConnellsburg, PA 17233-9533  
 Telephone 717-485-5161 Toll-free in US 877-JLG-LIFT  
 Fax 717-485-6417  
 www.jlg.com

Printed in USA  
 FORM NO.: SS-600A-0403-10M  
 PART NO.: 3131120  
 R040502

