

# Telescopic Boom Lift

**UpRight**  
POWERED ACCESS



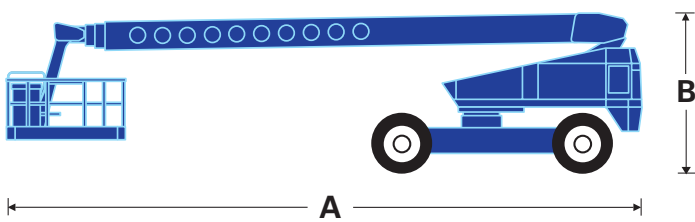
- 40.4m max. working height
- 19.2m max. outreach
- 2.4m, 90° jib
- 180° hydraulic powered platform rotation
- Driveable at full height
- Proportional control of drive, boom lift and slew
- 4 wheel drive
- Envelope management system

# SB126J

# SB126J boom lift specifications

	<b>SB126J</b>
max. working height	40.4m
max. platform height	38.4m
max. outreach	19.2m
platform capacity (SWL)	227kg
platform size	0.76m x 2.44m
platform rotation	180°
jib length	2.4m
jib working arc	90°
overall width	2.6m
operational width	3.9m
overall length <b>A</b>	13.7m
lowered height <b>B</b>	3.2m
min. transport length	13.1m
gross weight	19,119kg
inside turning radius	6.1m
max. drive speed (lowered)	4.8kmh
ground clearance	330mm
gradeability	42%
tyres	18 x 22.5 loader lug poly filled
drive system	4 wheel drive
controls	joystick proportional drive, lift, extend, jib and slew
power source	Cummins 3.3 litre turbo water cooled diesel 81hp

Specifications subject to change without notice. Photos and diagrams in this brochure are for promotional purposes only. Refer to appropriate UpRight operators manual for detailed instructions on the proper use and maintenance.



BP1: SB126J 8/07

**UpRight**  
POWERED ACCESS

Vigo Centre, Birtley Road, Washington,  
Tyne & Wear, NE38 9DA, U.K.

Sales Tel: +44 (0) 845 1550 057 • Spare Parts Tel: +44 (0) 845 1550 058

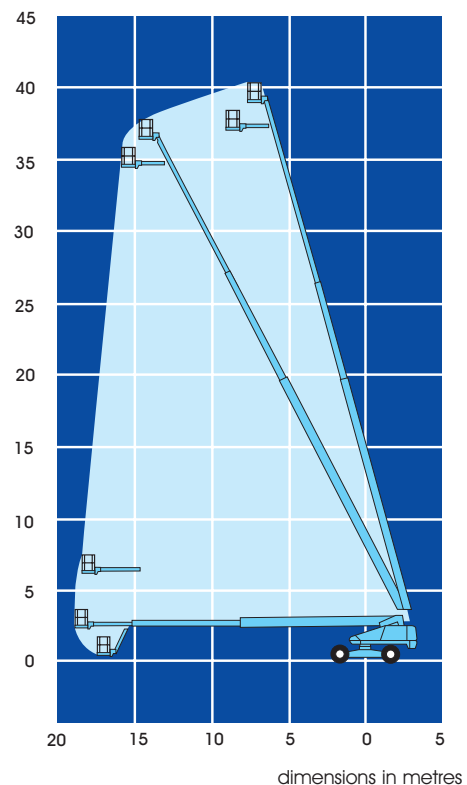
[www.upright.com](http://www.upright.com)

## standard features

- 2.4m, 90° jib
- Hydraulic powered platform rotation
- 4 wheel drive
- Proportional control of drive, boom lift and slew
- Foam filled lug tyres
- Driveable at full height
- Operator horn
- Extra finger protection handrail
- Hydraulic extending rear axle
- Envelope management system
- 1 year parts and labour warranty
- 5 year structural warranty

## options

- Hydraulic generator
- Platform control box cover
- Twin platform work lights
- Airline to platform
- Amber beacon on boom
- Swing gate in lieu of drop bar
- Sand blast protection kit
- Driving lights
- Cold weather start kit
- Hydraulic system cold weather warm-up kit
- Drive motion alarm
- Towing package



**CE** This product is available with the CE mark confirming compliance with all relevant European Machinery Directives

manufactured by  
**UpRight**  
POWERED ACCESS