

# The All New **BoSS X3X-SP**

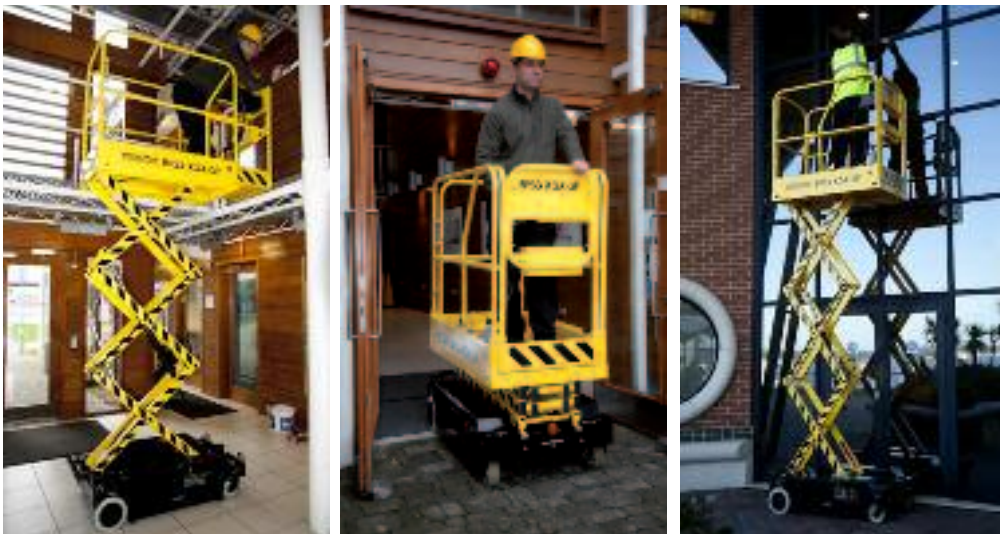
The ultimate self propelled micro scissor lift

## BoSS X-Series goes self propelled...

The BoSS X3X-SP is the new tough, professional, self propelled micro scissor lift from the Youngman Group, one of the world leading suppliers of innovative work at height solutions. Designed to be the tallest, slimmest and lightest self propelled micro scissor lift of its kind, the BoSS X3X-SP offers unrivalled benefits and a host of class leading features which include:

- Safe working height of 5.14m – (Platform height – 3.14m)
- Only 760mm wide – fits through personnel doorways and into passenger lifts
- For indoor and outdoor use – wind rating with non extended platform
- Highly manoeuvrable – turns within its own footprint of only 1.27m
- Driveable at full height (13.5m/min)
- 350 lifts and descents, 16.1km of driving or mix of two on a single charge
- 1.65m platform length (including 0.4m extension)
- Weight of 495kg facilitating lifting on a standard tail lift
- Straight line driving with swivel castor lock feature
- Raised platform driving speed selection (when lowered)
- Pothole protection activation on platform ascent
- Emergency platform lowering (both using backup power & manual)
- Ramp loading – up to 35% (19.2°)
- Longitudinal forklifting points for vehicle loading
- Low battery protection system
- Electromagnetic brakes on drive motors
- Tilt sensor and overload protection as standard
- Base unit draws for easy maintenance access

Call now on 01621 745900 to find out more and be one of the first to see probably the best self propelled micro scissor lift in the world



CE EN 280 IP54



Each machine is tested and certified to comply with the requirements of EN 280 and the European Machinery, Low Voltage and Electromagnetic Compatibility Directives.

# BOSS X3X-SP

## Full specification & performance

### Rated load, manual forces & weight:

Safe Working Load (including on platform extension)	150kg (1 person (80kg) + 70kg tools & materials)
Maximum allowable manual force	200N
Maximum allowable chassis inclination	1.5°
Maximum allowable wind speed	12.5m/s (with platform closed)
Maximum load per wheel	420kg (based on drive wheels - swivel castor rating 500kg)
Machine weight	495kg
Maximum point loading	14.83kg/cm <sup>2</sup>

### Dimensions:

Maximum platform height	3.14m
Minimum platform height	0.63m
Maximum safe working height	5.14m
Platform delay on descent	1.86m
Platform width	0.7m
Platform length	1.25m - 1.65m
Platform guardrail height	1.1m
Toeboard height	0.15m
Overall width	0.76m
Stowed height	1.74m (0.89m with guardrails removed)
Stowed length (with step deployed)	1.39m
Ground clearance	Platform lowered 0.055 - 0.09m - Platform raised 0.01m

### Electrical:

Voltage	24V DC
Power pack motor	1.2kW DC
Drive wheel motors	24V/2800rpm/0.5kW
Batteries (deep cycle/sealed gel)	2 x 12V/100Ah
Battery charger	100-120V/200-240V automatic switching

### Hydraulics:

Maximum hydraulic pressure	250 bar
Working pressure	120 bar
Hydraulic fluid reservoir	2 litres

### Performance:

Maximum number of lifts/descents on full charge	>350 (150kg)
Ascent time	19 seconds (150kg)
Descent time	21 seconds (150kg)*
Maximum driving speed - platform lowered	65m/minute
Maximum driving speed - platform raised	13.5m/minute

*\*Including 3 seconds for the intermediate stop on descent*

Each machine is supplied with 6 months LOLER certification (UK only), 12 months parts warranty, instruction manual, maintenance manual & EC Declaration of Conformity

**PROLIFT**  
**Access Ltd**

**☎: 0845 3664755**  
**E: [info@proliftaccess.co.uk](mailto:info@proliftaccess.co.uk),**  
**W: [www.proliftaccess.co.uk](http://www.proliftaccess.co.uk)**